

**ozito**

**power  
garden**

# **Ecomow Electric Mower**

**1100 Watt**

**Operation Manual**

**2 Year Replacement Warranty**

**ECO-320 - Type 1**



0509

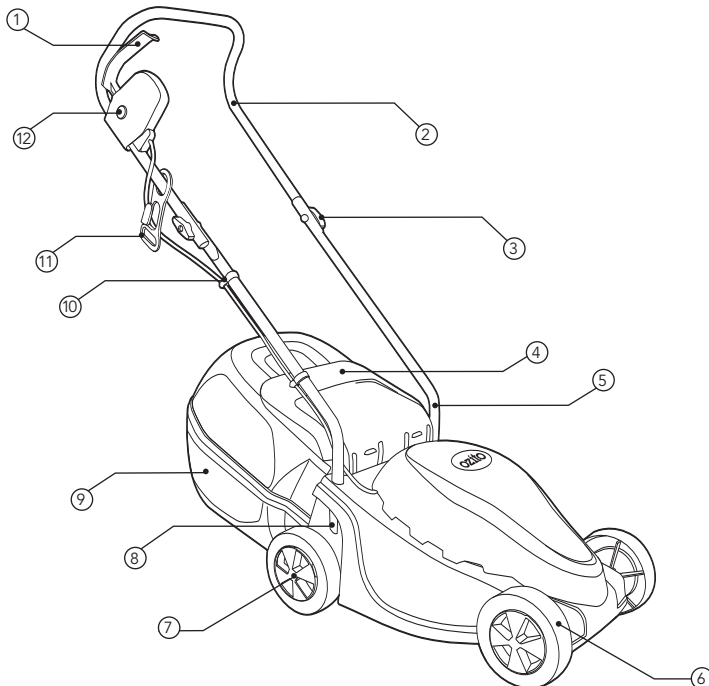
**To view the entire range visit: [www.ozito.com.au](http://www.ozito.com.au)**

## SPECIFICATIONS - MODEL NO. ECO-320

<b>Motor Size:</b>	1100W
<b>Input:</b>	230V ~ 50Hz
<b>No Load Speed:</b>	3000/min
<b>Cutting Diameter:</b>	320mm
<b>Cutting Heights:</b>	31mm, 47mm, 63mm
<b>Type:</b>	1

<b>Features:</b>	Height Adjustable Safety Lock off Switch Induction Motor Large Rear Catcher
------------------	--

- |                         |                                |
|-------------------------|--------------------------------|
| 1. Start/stop lever     | 7. Wheel hub                   |
| 2. Upper handle         | 8. Lower handle securing point |
| 3. Handle securing knob | 9. Grass catcher               |
| 4. Catcher flap         | 10. Cord clips                 |
| 5. Lower handle         | 11. Cord retainer              |
| 6. Wheels               | 12. Lock-off button            |



## TABLE OF CONTENTS

SPECIFICATIONS - MODEL NO. ECO-320.....	Page 2
TABLE OF CONTENTS.....	Page 3
INTRODUCTION.....	Page 4
SAFETY INSTRUCTIONS.....	Page 4
ASSEMBLY .....	Page 7
FITTING WHEELS.....	Page 7
FITTING LOWER HANDLES.....	Page 8
FITTING AND USING CORD RETAINER.....	Page 9
FITTING UPPER HANDLE.....	Page 9
GRASS CATCHER.....	Page 9
HOW TO MOW.....	Page 11
ON / OFF SWITCH.....	Page 11
ADJUSTING CUTTING HEIGHT.....	Page 11
REMOVING AND FITTING THE BLADE.....	Page 12
MAINTENANCE .....	Page 13
DESCRIPTION OF SYMBOLS.....	Page 13
CONTENTS .....	Page 14
WARRANTY.....	Page 15

## INTRODUCTION

Congratulations on purchasing an Ozito Lawnmower. We aim to provide quality tools at an affordable price. We hope you will enjoy using this tool for many years.

Your Ozito Ecomow Electric Mower ECO-320 has been designed for small to medium sized lawns and is for DIY purposes only.

## SAFETY INSTRUCTIONS

**Warning!** When using mains-powered tools, basic safety precautions including the following should always be followed to reduce risk of fire, electric shock, personal injury and material damage.

Read the whole manual carefully and make sure you know how to switch the tool off, in an emergency, before operating the tool.

Save these instructions and other documents supplied with this machine for future reference.

## ELECTRICAL SAFETY

The electric motor has been designed for one voltage only. Always check that the power supply corresponds to the voltage on the rating plate.



This tool is double insulated in accordance with AS/NZS3100; therefore no earth wire is required. If the supply cord is damaged, it must be replaced by an electrician or a power tool repairer in order to avoid a hazard.

1. Before use, examine cord for damage; replace it if there are signs of damage or ageing.
2. Do not use the lawnmower if the electric cables are damaged or worn.
3. Immediately disconnect from the mains electricity supply if the cord is cut, or the insulation is damaged. Do not touch the electric cord until the electricity supply has been disconnected. Do not repair a cut or damaged cord; replace it with a new one.
4. Your extension lead must be unwound, coiled leads can overheat and reduce the efficiency of your mower.
5. Keep lead away from lawnmower; always work away from the power point mowing up and down never in circles.
6. Do not pull lead around sharp objects.
7. Always switch off at the mains before disconnecting any plug, cord or extension lead.

## ELECTRICAL SAFETY (cont.)

8. Never carry the product by the cord.
9. Never pull on the cord to disconnect any of the plugs.
10. Use only AC mains supply voltage shown on the product rating label.
11. It is recommended that the appliance should be supplied via a residual current device (RCD) with a tripping current of not more than 30 mA.
12. Use at least a 10 Amp rated extension cord with a maximum length of 25 meters.

## GENERAL

1. This appliance is not intended for use by young children or infirmed persons unless they have been adequately supervised by a responsible person to ensure that they can use the appliance safely.
2. Only use the lawn mower in the manner and for the functions described in these instructions.
3. Never operate the lawnmower when you are tired, ill or under the influence of drugs, alcohol or medicine.
4. The operator or user is responsible for accidents or hazards occurring to other people or their property.
5. Use the lawnmower only in daylight or good artificial light.
6. Avoid operating your lawnmower in wet grass, where feasible.
7. Take care in wet grass, you may loose your footing.
8. On slopes be extra careful of your footing and wear non-slip footwear.
9. Mow across the face of slopes, never up and down.
10. Exercise extreme caution when changing direction on slopes. Walk never run.
11. Mowing on banks and slopes can be dangerous. Do not mow on **banks** or **steep** slopes.
12. Do not walk backwards when mowing, you could trip.
13. Never cut grass by pulling the mower towards you.
14. Switch off before pushing the mower over surfaces other than grass.
15. Never operate the lawnmower with damaged guards or without guards in place.
16. Keep hands and feet away from the blade at all times and especially when switching on the motor.
17. Young children should be supervised to ensure that they do not play with the appliance.
18. No one is to operate this appliance without reading and understanding these operating instructions.

## GENERAL (cont.)

19. Do not tilt the lawnmower when the motor is running, except when starting or stopping. In this case, do not tilt more than absolutely necessary and lift only the part which is away from the operator. Always ensure that both hands are in the operating position before returning the appliance to the ground.
20. Do not put hands near the grass discharge chute.
21. Never pick up or carry a mower when it is operating or still connected to the mains supply.
22. Remove the plug from the mains:
  - before leaving the mower unattended for any period
  - before clearing a blockage
  - before checking, cleaning or working on the appliance
  - if you hit an object. Do not use your lawnmower until you are sure that the entire lawnmower is in a safe operating condition
  - if the lawnmower starts to vibrate abnormally. Check immediately. Excessive vibration can cause injury.

## ADDITIONAL SAFETY RULES FOR LAWN MOWERS



IF not used properly this lawnmower can be dangerous! This lawnmower can cause serious injury to the operator and others, the warnings and safety instructions must be followed to ensure reasonable safety and efficiency in using this lawnmower. The operator is responsible for following the warning and safety and instructions in this manual and on the lawnmower. Never use the mower unless the catcher or guards provided by the manufacturer are in the correct position.

### Explanation of Symbols on the Ecomow Electric Mower - ECO-320



Warning



Read the user instructions carefully to make sure you understand all the controls and what they do.



Always keep the lawnmower on the ground when mowing. Tilting or lifting the lawnmower may cause stones to be thrown out.



Keep bystanders away. Do not mow whilst people especially children or pets are in the mowing area.

## ADDITIONAL SAFETY RULES FOR LAWN MOWERS (cont.)



Switch Off! Remove plug from mains before adjusting, cleaning or if cable is entangled or damaged. Keep the cable away from the blade.



Beware of severing toes or hands. Do not put hands or feet near a rotating blade.



Blade continues to rotate after the machine is switched off. Wait until all machine components have completely stopped before touching them.

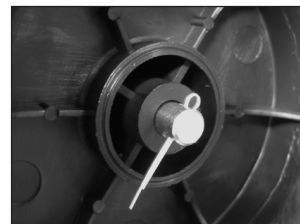
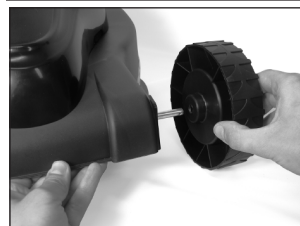


Do not mow in the rain or leave the lawnmower outdoors while raining.

## ASSEMBLY

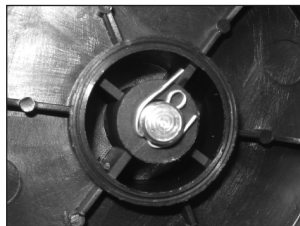
### Fitting the wheels

1. Remove the body of the lawn mower from the packaging and place on a flat surface.
2. Slide all four wheels over the axle pins on each corner of the mower body.
3. Slide split pins (supplied) through each hole in the four axle pins which are protruding through the wheels.



## ASSEMBLY (cont.)

4. Bend the two ends of each split pin backwards around the axle pin to secure the wheels to the mower body.



5. Insert the caps over the wheels and push them in. This may require a little bit of force. They are properly assembled to the wheels when they click into place.



### Fitting the lower handles to the mower body

1. Insert the lower handles into the two holes in the base of the mower body. The screw holes in the lower handle bars should face outwards.



2. Fit the screw and washer (supplied) through the hole above the rear wheel, align with the hole in the metal lower handle and then secure into place using a phillips head screwdriver. Repeat the same to the hole in the opposite rear side of the mower.

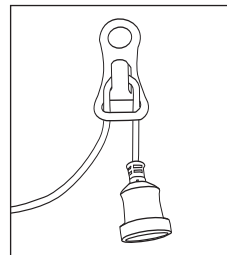
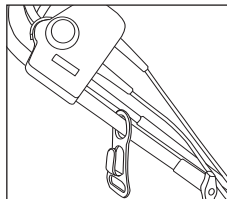




## ASSEMBLY (cont.)

### Fitting and using the cord retainer

- To fit the cord retainer, slide it over the upper handle end (on the switch side) before fixing the upper handle to the lower handles.
- The cord retainer prevents the extension lead from being disconnected during use. Fit the extension lead (socket end of lead) through the loop and secure over the hook as shown in the diagram. Once fitted, connect the lawn mower power plug into the extension lead socket.



### Fitting the upper handle to the lower handles

- Place the upper handles over the upper ends of the lower handles. Fit the bolts through the inner side of the lower handles and then through the holes in the upper handles. Secure in place by screwing the handle securing knobs over the protruding ends of the bolts.



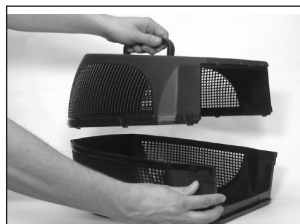
### Securing the power cord to the handle

- Secure the power cord running from the switch housing to the body of the mower by using the two securing clips (supplied). Fit one closer to the mower body end of the handle, ensure a little slack is left between the clip and where the cord enters the mower housing. Fit the other clip to the upper end of the lower handle.



### Assembling the grass catcher

- To assemble the grass catcher align the two halves and push them together. Ensure the two halves clip together around the whole middle section.



## ASSEMBLY (cont.)

### Fitting and removing the grass catcher

- To fit the grass catcher lift up the rear flap.
- Clear out any grass that may be in the grass chute. Whenever clearing out grass from the grass chute, the mower must first be turned off and disconnected from the power supply.
- Guide the two holes on the top of the catcher over the two raised clips on the mower housing.
- Lower the rest of the catcher and allow it to sit in place. Lower the catcher flap.
- To empty the grass catcher, lift the flap then lift the catcher off the two raised housings clips.



**Warning!** When assembling the catcher back to the mower after emptying, always ensure there is no build up of grass in the grass chute. If needing to clear the grass, always ensure the mower is disconnected from the power supply prior to clearing. A build up of grass in the grass chute may prevent grass from moving into the grass catcher effectively.

## PREPARATION

1. While using your lawn mower always wear substantial footwear and long trousers.
2. Make sure the lawn is clear of sticks, stones, wire and debris; they could be thrown by the blade.
3. Before using the lawn mower and after any impact, check for signs of wear or damage and repair as necessary.
4. Replace a worn or damaged blade together with the blade bolt to preserve balance.

# HOW TO MOW

## On/Off Switch

To prevent accidental start up of the motor the mower is designed with a dual action switch. To start, press the button and pull the lever. The motor automatically stops upon the releasing the lever.



**Warning!** The blade will coast after the switch has been released. Be aware of the necessary time it takes for the blade to stop coasting. Do not try to stop the blade from coasting, allow it to stop by itself.

1. For the best results, mow the outside edge of the lawn in a clockwise direction first.
2. Then start mowing the edge of the lawn nearest to the power point so the lead is laid out on the lawn you have already cut.
3. For best grass collection, always mow in a straight line; do not swing the lawnmower from side to side.

## Do Not Overload Your Mower

Mowing long thick grass may cause the motor speed to drop; you will hear a change in the motor sound. If the motor speed drops you may overload your lawnmower, which may cause damage. When mowing in long thick grass a first cut with the cutting height set in the highest position, this will help reduce the load.

ALWAYS HANDLE THE BLADE WITH CARE – SHARP EDGES COULD CAUSE SERIOUS INJURY. **USE GLOVES.**

# CUTTING HEIGHT ADJUSTMENT

To obtain the desired cutting height, the front and rear axles are repositioned on the underside of the mower housing



**Warning!** Disconnect the mower from the power supply and ensure the blade has stopped coasting before adjusting the height.

## To adjust the front wheel cutting height position (Fig. a)

1. Turn the mower upside down.
2. Pull the wheel axle towards the front of the mower.
3. Locate the wheel axle into the desired cutting height adjustment position.

**Note:** Make sure that both front right and left wheel are located in the same cutting height adjustment position.

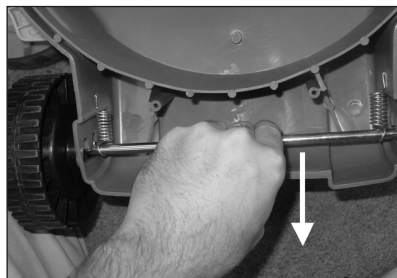


Fig. a

## CUTTING HEIGHT ADJUSTMENT (cont.)

### To adjust the rear wheel cutting height position (Fig. b)

1. Turn the mower on its side.
2. Pull the rear wheel axle towards the mower's catcher flap.
3. Locate the wheel axle into the desire cutting height adjustment position.

**Note:** Make sure that both rear right and left wheel are located in the same cutting height adjustment position.

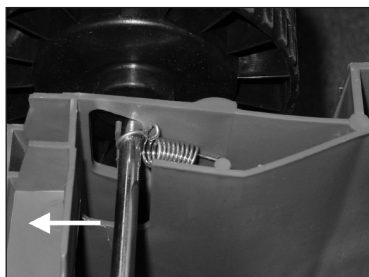


Fig. b

### Cutting height positions (Fig. c)

1. 31 mm  
(lowest cutting height position)
2. 47 mm
3. 63 mm  
(Highest cutting height position)



Fig. c

**Note:** Disconnect the mower from the power supply and ensure that the blade has stopped coasting before removing and fitting the blade.

### Removing the Blade

1. To remove the blade bolt, hold the fan firmly and with a spanner loosen the blade bolt by turning it anti-clockwise.
2. Remove the blade bolt, and blade.
3. Inspect for damage and clean as necessary.

**Renew your metal blade after 50 hours mowing or 2 years whichever is the sooner – regardless of condition. If the blade is cracked or damaged replace it with a new one. Never use a blade bolt if the insulated head is damaged cracked or missing.**











### Fitting the Blade

1. Fit the blade to the fan with the tilt edges of the blade facing towards the mower, ensuring the blade is located onto the fan location points correctly.
2. Re-assemble blade bolt through blade and fan.
3. Hold the fan firmly and tighten blade bolt with a spanner. Do not over tighten.

## MAINTENANCE

1. Keep all nuts, bolts and screws tight to be sure the lawnmower is in a safe working condition.
2. Check the catcher frequently for wear or deterioration.
3. Replace worn or damaged parts for safety.
4. Only use the replacement blade, blade bolt, and impeller specified for this product.
5. Be careful during adjustments of the lawnmower to prevent entrapment of the fingers between moving blade and fixed parts of the machine.
6. Oil the wheel pins.
7. Store the lawnmower in a dry place.

## DESCRIPTION OF SYMBOLS

<b>V</b>	Volts	<b>Hz</b>	Hertz
<b>~</b>	Alternating current	<b>W</b>	Watts
<b>/min</b>	Revolutions or reciprocation per minute	<b>No</b>	No load speed
	Double insulated		Warning
	Regulator compliance mark		
	Read the user instructions carefully to make sure you understand all the controls and what they do.		
	Always keep the lawnmower on the ground when mowing. Tilting or lifting the lawnmower may cause stones to be thrown out.		
	Keep bystanders away. Do not mow whilst people especially children or pets are in the mowing area.		
	Switch Off! Remove plug from mains before adjusting, cleaning or if cable is entangled or damaged. Keep the cable away from the blade.		
	Beware of severing toes or hands. Do not put hands or feet near a rotating blade.		
	Blade continues to rotate after the machine is switched off. Wait until all machine components have completely stopped before touching them.		
	Do not mow in the rain or leave the lawnmower outdoors while raining.		

## CARING FOR THE ENVIRONMENT



Power tools that are no longer usable should not be disposed of with household waste but in an environmentally friendly way. Please recycle where facilities exist. Check with your local council authority for recycling advice.



Recycling packaging reduces the need for landfill and raw materials. Reuse of recycled material decreases pollution in the environment. Please recycle packaging where facilities exist. Check with your local council authority for recycling advice.

## CONTENTS

1 x Lawnmower ECO-320  
2 x Lower handles  
1 x Upper handle  
4 x Wheels  
1 x Spanner  
2 x Cable clips  
2 x Handle bolts & knobs

1 x Cord retainer  
4 x Wheel caps  
2 x Screws (handle securing)  
2 x Washers (handle securing)  
4 x Split pins  
2 x Catcher halves  
1 x Operation Manual

## OZITO INDUSTRIES PTY LTD

### AUSTRALIA (Head Office)

1 - 23 Letcon Drive, Bangholme, Victoria, Australia 3175

Telephone: 1800 069 486

Facsimile: +61 3 9238 5588

Website: [www.ozito.com.au](http://www.ozito.com.au)

Email: [enquiries@ozito.com.au](mailto:enquiries@ozito.com.au)

# WARRANTY

THIS WARRANTY FORM AND CONFIRMED BUNNINGS REGISTER RECEIPT SHOULD BE **RETAINED BY THE CUSTOMER** AT ALL TIMES

The warranty is only made available by returning the product to your nearest Bunnings Warehouse with a **confirmed Bunnings register receipt**.

**YOUR WARRANTY FORM SHOULD BE RETAINED  
BY YOU AT ALL TIMES.**

**SHOULD YOU HAVE ANY QUESTIONS PRIOR TO  
RETURNING YOUR PRODUCT FOR WARRANTY OR  
REPAIR PLEASE TELEPHONE OUR CUSTOMER  
SERVICE HELPLINE:**

**Australia 1800 069 486  
New Zealand 0508 069 486**

TO ENSURE A SPEEDY RESPONSE PLEASE HAVE THE MODEL NUMBER AND DATE OF PURCHASE AVAILABLE. AN OZITO CUSTOMER SERVICE REPRESENTATIVE WILL TAKE YOUR CALL AND ANSWER ANY QUESTIONS YOU MAY HAVE RELATING TO THE WARRANTY POLICY OR PROCEDURE.

PURCHASED FROM: \_\_\_\_\_

DATE PURCHASED: \_\_\_\_\_

## **2 YEAR REPLACEMENT WARRANTY**

Your Ozito tool is guaranteed for a period of 24 months from the **ORIGINAL** date of purchase under the following conditions: **Professional, industrial or high frequency use will VOID this warranty.**

### **WARNING**

**The following actions will result in the warranty being void.**

- If the tool has been operated on a supply voltage other than that specified on the unit.
- If the tool shows signs of damage or defects caused by or resulting from abuse accidents or alterations.
- If the tool has been disassembled or tampered with in any way.

**Note:** Warranty excludes consumable parts such as brushes, batteries, sanding pads, blades, discs, drill bits, blade bolt spanners and cord clips.